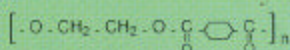




# TREVIRA TISSUE SILO

**AGRIFLEX**  
STORAGE AND BATCHING SYSTEM

## TREVIRA TISSUE



Polyethylene terephthalate

Trevira tissue is manufactured with polyethylene terephthalate which has marked characteristics under mechanical stress to rupture. As well as an almost unlimited lifespan.

A tissue strip of 4 inches can withstand a force of 5,500 lbs.

The tissue is suitable to contain foodstuffs according to Food and Drug Administration cap. 1 - paragr. 177 - 1630 (American Legislation). The Trevira tissue is easily washable in an industrial dry-cleaning organisation. Using perchlorate to disinfect the tissue.

4 Inches



5500 lbs.



### UPPER PART

Completely closed by tissue with a clutch for pneumatic charging pipe and evacuation air pipe.

### STRENGTHENED BRACES

The braces are stitched externally to the trevira tissue to increase the mechanical resistance of the tissue.

### TISSUE WALLS

The flexibility of the trevira tissue allows for easy maintenance and cleaning of the silos. Both ruptures and tears, although rare, can be stitched.

### TELESCOPIC STRUCTURE HEIGHT REGULATION

During the erection of the silos the structure is lifted up as much as possible to the ceiling in order to ensure that all of the height available is utilised.

### PNEUMATIC CHARGING PIPE

The silo is designed to receive the bulk product by pressure, by a transporter vehicle. If this method of loading is unavailable, the silo may be filled via a pressure system incorporated within the infeed hopper.

### EVACUATION AIR PIPE

The evacuation air pipe is constructed from rigid steel with filter bags attached to filter the air. This pipe alternates with the charging pipe, thus cleaning it and providing greater piping hygienically.

### SUPPORTING STRUCTURE

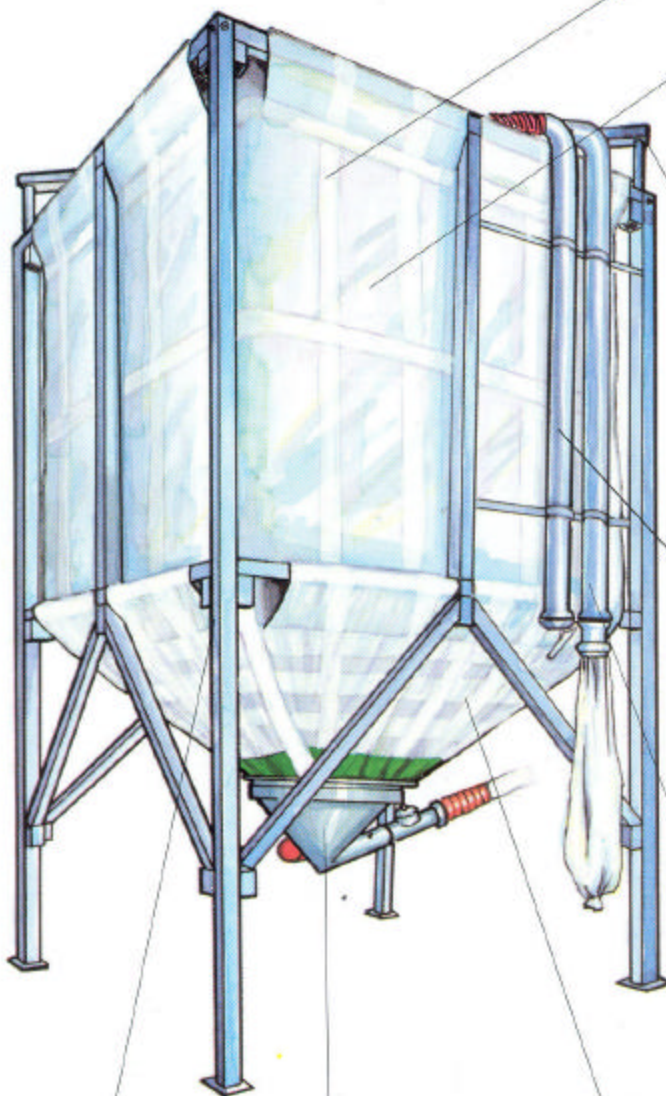
The supporting structure, which is manufactured from galvanised steel, is designed to a factor of safety three times higher than the nominal weight to be contained.

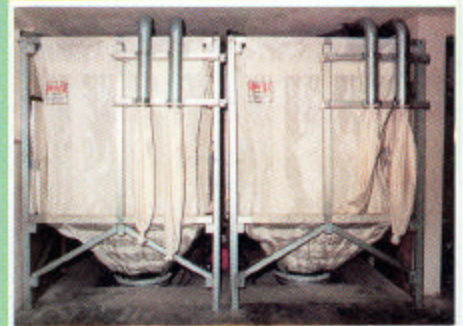
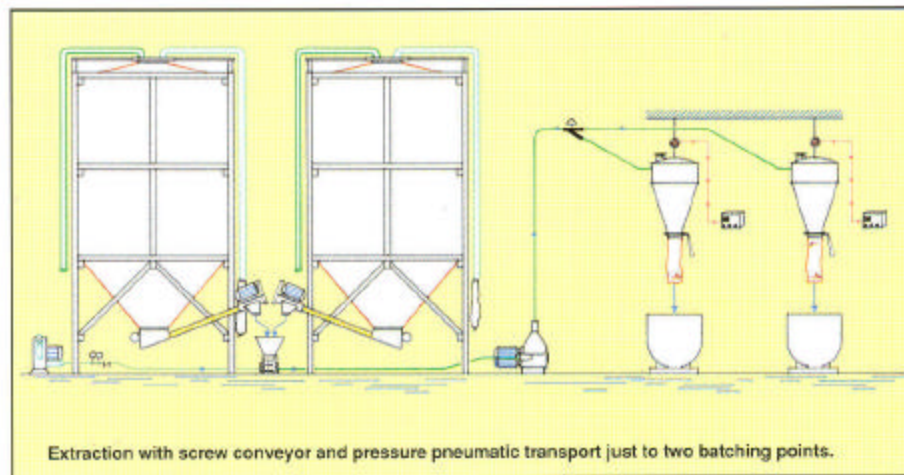
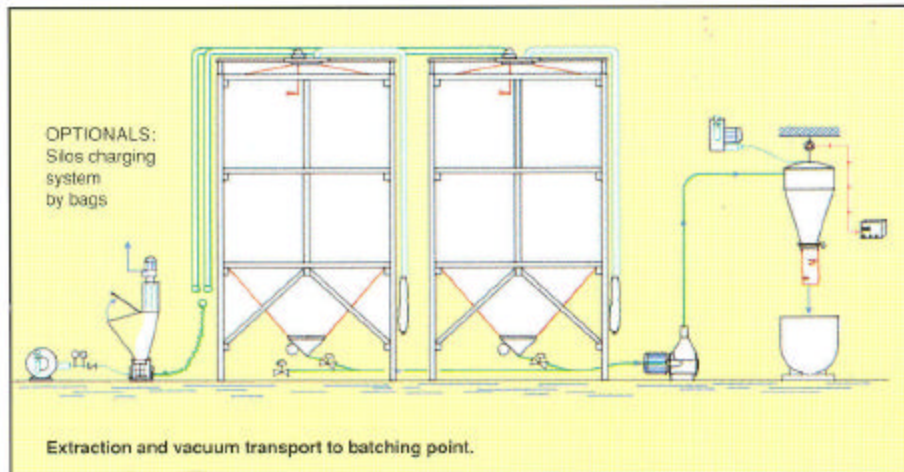
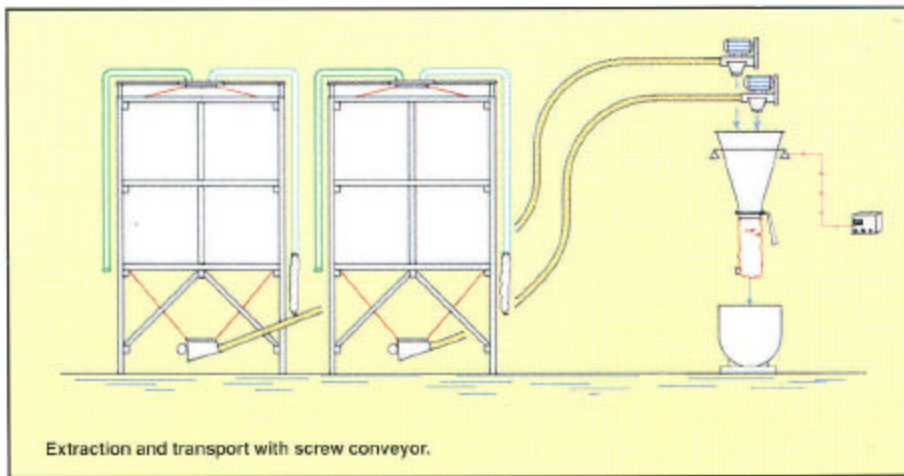
### VIBRATING BOTTOM HOPPER

The specially designed vibrating bottom hopper ensures that all of the product is removed from the hopper.

### CONICAL PART

The conical part is designed with a 40° inclination this allowing the product to be emptied by the force of gravity.





Where height is a problem, a hole can be made in the ground.



Silos on steel structure.

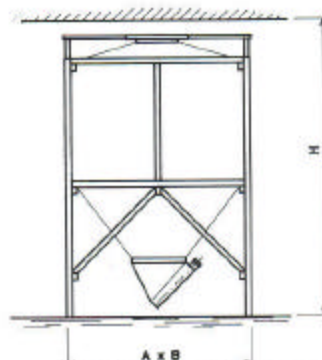
Silos with a greater height demand are supplied through the Agriflex Trevira range of silo which have been extensively tested and proved to be a winning solution for all storage in terms of:

- practicalness
- flexibility
- economical

Besides standard models, Agriflex devises solutions to individual clients needs.

**TECHNICAL CHARACTERISTICS:**

VOL cu. ft.	Dimensions in inches		Capacity in Pounds	
	A x B (Base)	H. Height	Flour 37.39 lbs/cu. ft.	Sugar 49.86 lbs/cu. ft.
176.5	82.65 x 82.68	106.30	6.610	8.600
247.1	79.53 x 79.53	122.05	8.800 - 9.900	12.100 - 13.200
317.7	94.49 x 94.49	122.05	11.000 - 12.100	15.400 - 16.500
388.3	105.91 x 105.91	129.98	13.200 - 14.300	18.700 - 19.800
458.9	105.91 x 105.91	137.80	16.500 - 17.600	23.100 - 24.200
529.5	108.07 x 108.07	151.98	19.800 - 20.900	26.400 - 27.500
600.1	108.07 x 108.07	163.39	22.000 - 23.100	29.700 - 30.800
776.6	125.20 x 125.20	161.42	26.800 - 29.700	36.500 - 39.600
882.5	125.20 x 125.20	175.20	33.000 - 34.100	44.200 - 46.200
1164.0	125.99 x 125.99	194.89	36.200 - 37.400	46.400 - 50.600
1263.9	125.99 x 125.99	218.51	41.800 - 44.000	57.200 - 59.400
1341.4	130.71 x 130.71	230.32	46.400 - 50.600	66.200 - 68.200
1482.6	130.71 x 130.71	246.07	55.000 - 57.200	72.600 - 74.800
1765	142.52 x 142.52	245.07	56.000 - 68.200	66.000 - 90.200



H INDICATES THE MINIMAL HEIGHT OF THE ROOM WHERE THE SILO IS GOING TO BE INSTALLED. FOR INSTALLATIONS WITH VACUUM TRANSPORT, THE HEIGHT IS REDUCED BY 8 INCHES.

## Why a storage installation?

- Saving in raw material purchases
- Discharging time reduction
- Rationalization of space
- Automatic management of recipes and stocks
- Increased hygiene
- Employee fatigue reduction
- Mistake elimination

## Why an AGRIFLEX installation?

- Twenty years experience at your service
- Technical assistance pre and post sale
- Complete turnkey installation service

***AGRIFLEX: a way to work which time has given justification***

**AGRIFLEX**

**pro BAKE Inc.** COMPLETE LINE OF BAKING EQUIPMENT AND SYSTEMS  
e-mail: [probake@probake.com](mailto:probake@probake.com) web address: [www.probake.com](http://www.probake.com)

• Toll Free: 1-800-837-4427 • Tel: (330) 425-4427 • Fax: (330) 425-9742 2057 E. Aurora Road • Twinsburg, Ohio 44087